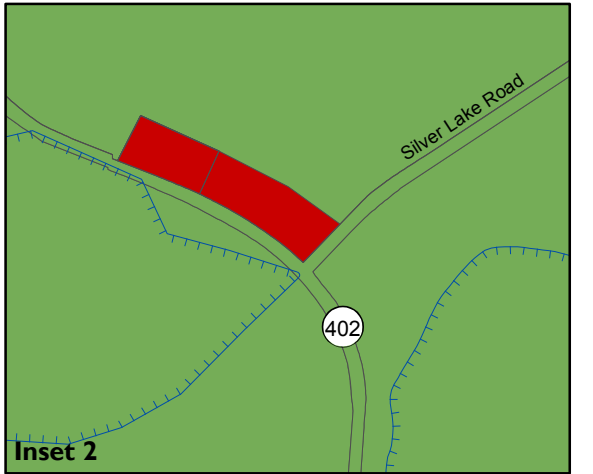
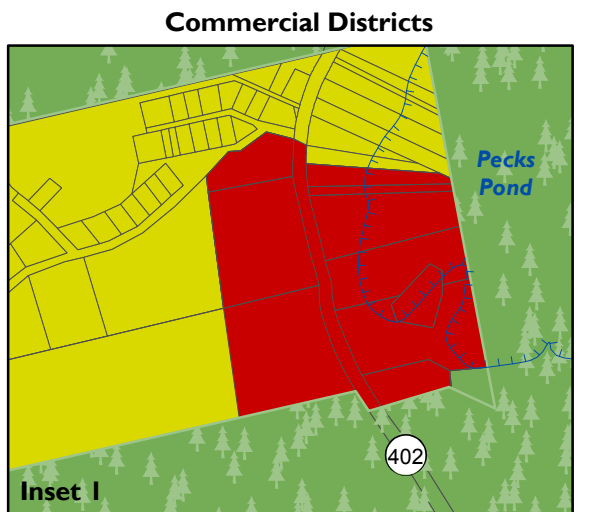
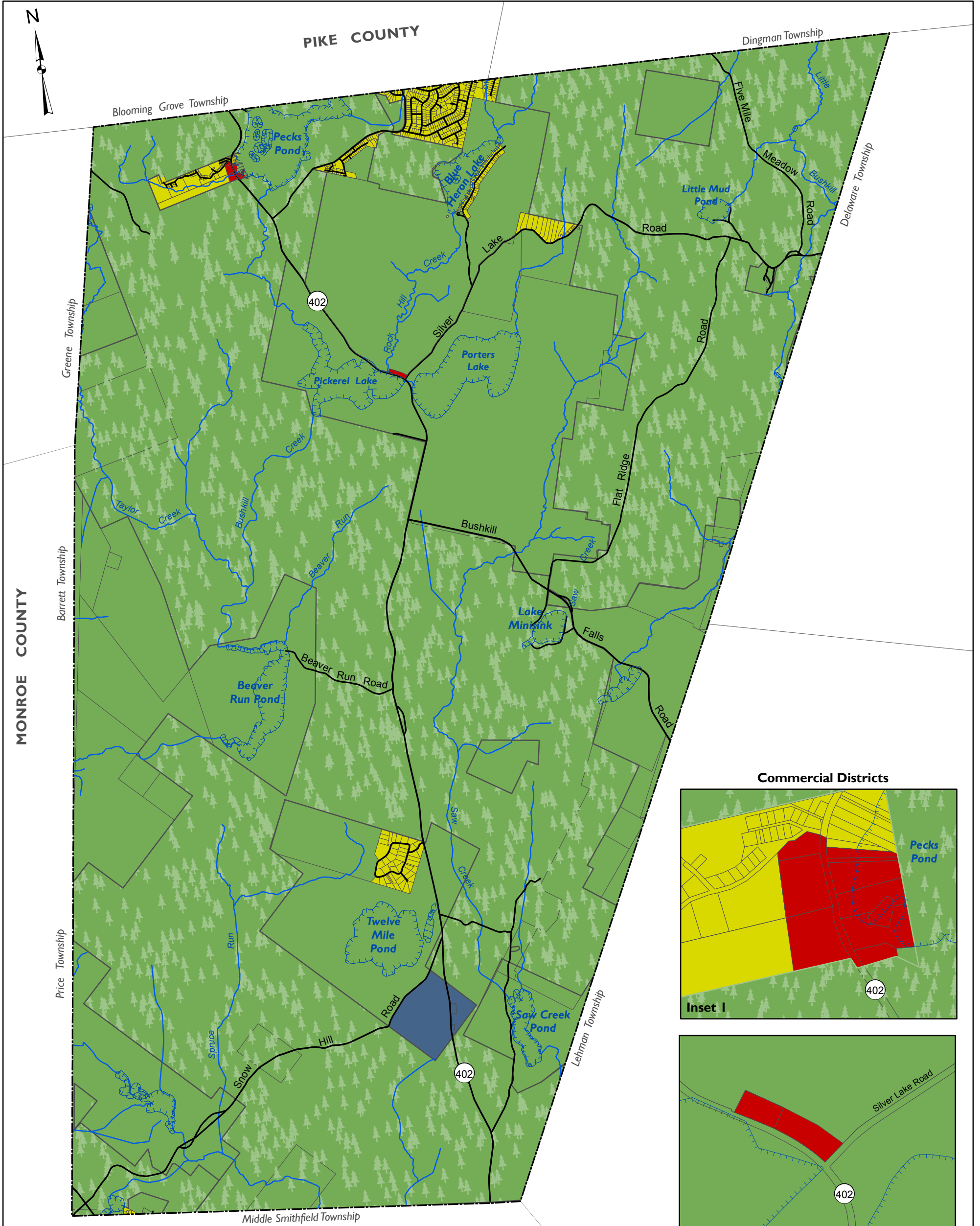


Porter Township Official Zoning Map 2011



PORTER TOWNSHIP OFFICIAL ZONING MAP 2011

Adopted in accordance with the Pennsylvania Municipalities Planning Code this ____ day of _____, 2011, at a duly convened meeting of the Board of Supervisors of Porter Township, Pike County, Pennsylvania.

Bill Powell, Chairman

Rob Hellyer, Supervisor

Theresa Koch, Supervisor

ATTEST:

ZONING DISTRICT BOUNDARIES

Zoning district boundary lines are intended to follow or be parallel to the center line of streets, streams, and lot or property lines as they exist on a recorded deed or plan of record in the Pike County Recorder of Deeds Office and on the Pike County Tax Maps at the time of enactment of the Zoning Map unless the district boundary lines are fixed by dimensions or are otherwise shown.

LEGEND

Water Bodies	Commercial District
Delaware State Forest	Conservation District
	Residential District
	Rural District

0 2,500 5,000 10,000
Feet